



Accordent Default User Interfaces Manual

Default UI version 3.2

Accordent Default User Interfaces Manual

Contents

Contents	3
Introduction	4
What is an Accordent User Interface?	4
User Interface Regions	6
How the UI works	7
Default Interfaces	7
Layout and Dimensions	8
Requirements and Compatibility	10
Accordent PM3	11
Description	11
Features	12
Customization	22
Accordent SL3	31
Description	31
Features	32
Customization	39
Index	43
Table of Figures	45
Resources	46

Introduction

Thank you for choosing Accordent Technologies. This manual has been created to provide a complete overview of the Accordent user interfaces that are installed by default on Accordent content creation applications. All features and functionalities will be described in detail, and we will demonstrate how to get the most out of your interfaces through customization.

What is an Accordent User Interface?

An Accordent user interface is a set of assets used within Accordent applications which allow the presenter to define the aspect and functionalities of live, on-demand, or local (CD) presentations.

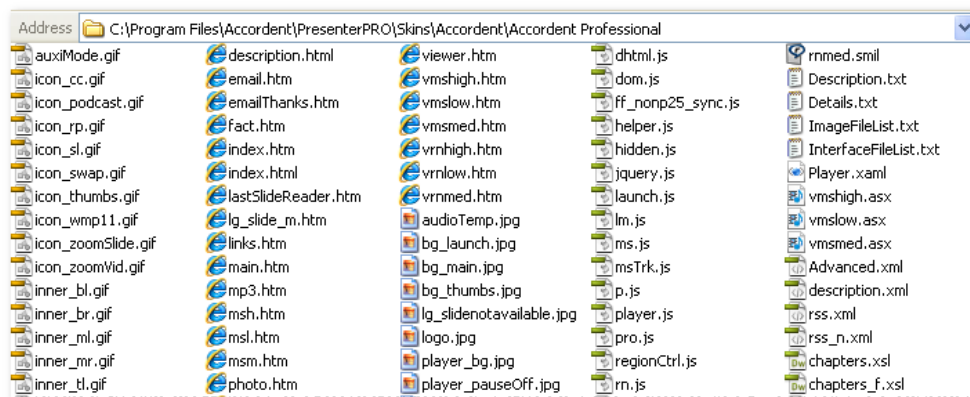


Figure 1: Files that make up an interface are found in the Skins folder of each application

The user interfaces described in this manual are installed by default in the Accordent Capture Station™, Accordent PresenterPRO™, and Accordent PresenterPLUS™ content creation applications.

Capture Station™ supports live presentations and archives an editable version for archive and on-demand consumption. PresenterPRO™ supports live presentations but also provides some basic post-production editing capabilities, such as adding or removing chapter points. PresenterPLUS™ creates on-demand presentations from an available media file, but can also be used to edit archived presentations from Capture Station™ or PresenterPRO™.

These interfaces are developed to work in conjunction with the Accordent Media Management System™ (AMMS), and to allow organizations to track user experience, interaction and participation.

A user interface, also referred to as a “skin”, is made up of a folder which contains several web files such as XHTML, JavaScript, CSS files, and images (Figure 1). Each interface is contained within the Skins folder of the Accordent application by default (this location can be changed), and is selected from the application during the publishing process. In a single-format application like PresenterPLUS™ you will only see interfaces that are compatible with the media format you are currently working with.

During the publishing process, you will be able to configure the set of features and options that are available to the selected interface. The application will then publish your configured presentation to a web server, locally, or to a CD for consumption.

While past versions of Accordent applications offered several interfaces differentiated by specific features, the latest updates have combined all these features into fewer interfaces. This effort has resulted in a smaller set of user interfaces to manage, more powerful and standardized user interfaces than ever before, and a wider range of customization possibilities out of the box for the content creator.

User Interface Regions

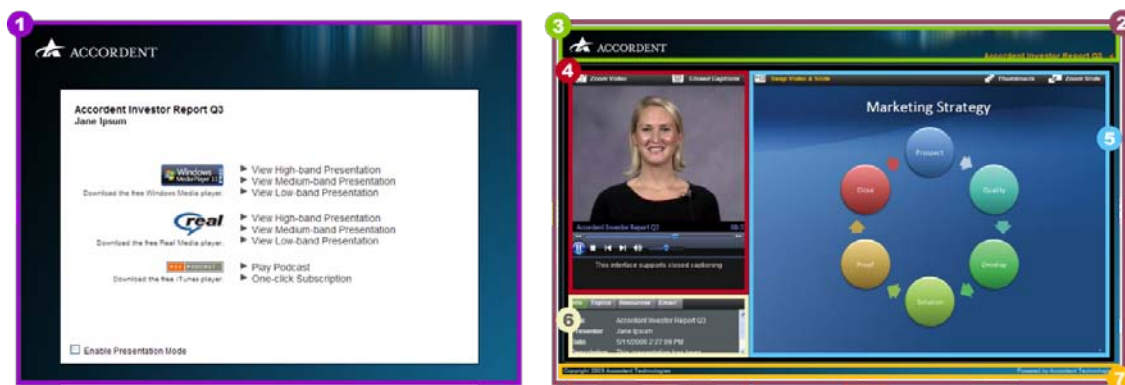


Figure 2: UI Regions

1. **Launch page** – This page contains links to the media types/bandwidth options available in a presentation. All media players used in Accordent interfaces are free and the launch page contains links to download the plug-in if a user does not already have it installed. The launch page will open the presentation window without any browser chrome (menu bar, address bar, status bar, etc.). In supported browsers, a user may also launch the presentation in Fullscreen Mode. A registration page may precede the launch page if Registration is enabled in the PM3 PresenterPRO™ user interface. The SL3 launch page includes additional features like a speaker image display and a live vs. on-demand mode indicator.
2. **Presentation Window** – This is the window that contains the actual presentation interface. An interface can be configured to display some or all of the following regions: video region, sync region, tabbed region.
3. **Header Region** – The header region is usually used to display the logo of an organization. This region can be customized with a different image. In some interfaces, the presentation title is also displayed in the header region.
4. **Media Region** – This region houses the media plug-in that the presentation uses. It can be a Windows Media, Real, Silverlight, Flash, MP3, or MP4 based. Closed captions can also be toggled on or off where available. Audio-Video presentations will give viewers the option to zoom the video to full screen. Audio-only presentations usually display a static image over the video region.

NOTE: Auxiliary mode in PresenterPRO™ uses this region to display only the static image since this mode does not use a media player.

5. **Sync Region** – The sync region is where rich media assets are synchronized to the media. This region, depending on the application, is capable of displaying images, URLs, or SWF (Flash) files. In PresenterPRO™ and PresenterPLUS™, PDF and PowerPoint decks are converted to images before they are used in a presentation. Where available, the header of the sync region will contain additional features to zoom a slide sync, launch a thumbnails window, or swap the position of the video and sync regions. URL and Flash syncs cannot be zoomed, and are not supported at all in the Accordent SL3 interface.
6. **Tabbed Region** – The tabbed region is a multi-panel region that serves a variety of purposes. Presentation metadata is displayed in the active tab by default. Other tabs can show a chapters list, additional resources, email addresses, a user Q&A form (Capture Station™ or PresenterPRO™) or interactive pages (PresenterPRO™ only). Some tabs will automatically show or hide depending on whether the current mode is live or on-demand. The Accordent SL3 interface uses icons in place of tabs, but reveals panels that display their respective information similarly.
7. **Footer Region** – The footer region contains a customizable copyright message and a link back to Accordent online. Some layout modes will hide this link due to space constraints.

How the UI works

A list of installed user interfaces can be selected after starting an Accordent content creation application. For each interface, a brief description of the features offered and supported is provided, along with a text grid for entering custom values (the custom tags grid).

Some features (closed captions, topics, user Q&A, etc.), can be enabled as needed. Other features (such as layout mode) will only accept a value from a predefined list. Other features require the presenter to browse for a local resource (image, document, etc.) to be uploaded to the content server along with the rest of the interface files, such as a custom background image or resource file. Finally, some dynamic text, such as the presentation title or description, can be defined from this text grid. In most cases, if no value is provided, or if an unknown value is present, the interface will use a default setting.

When the UI configuration is done and the publishing settings is finished (covered in the applications manual) the publishing process takes care of transferring the configured UI to the web server. At the end of the transfer when the UI is ready and can be accessed by the users, it is filled with the metadata related to the specific event and will react to the input coming from both the user and the presenter. If the event is published by Capture Station™ or PresenterPRO™, when the live event is done the application can take care of archiving the presentation and retransfer it to the web server for on demand access.

Default Interfaces

The following interfaces are installed by default with the Accordent applications:

Accordent Capture Station™

- Accordent PM3
- Accordent SL3

Accordent PresenterPLUS™

- Accordent PM3 (Audio Podcast)
- Accordent PM3 (FL)*
- Accordent PM3 (MS)
- Accordent PM3 (RN)
- Accordent SL3

Accordent PresenterPRO™

- Accordent PM3
- Accordent SL3

** The Accordent PM3 (FL) user interface replaces the previous Accordent Flv (Flash) UI.*

Layout and Dimensions

All interfaces now support multiple layouts. The following diagrams show the layouts offered by each interface, along with the dimensions in pixels.

		UI	
		Accordent PM3	Accordent SL3
Layout	default	Y	feature
	videoright	Y	feature
	fullscreenvideo	feature	-
	onlyvideo	Y	feature
	noslide	Y	feature
	largevideo	Y	-
	swapped	Y	feature

Figure 3: Layouts offered by each interface

	Presentation window		default	videoright	onlyvideo	largevideo	noslide	swapped
Accordent PM3 (Audio Podcast)	356 x 524	speaker image	-	-	-	-	320 x 240	-
		This interface does not support slides.						
Accordent PM3	997 x 624	video ST	320 x 240	320 x 240	320 x 240	555 x 416	320 x 240	555 x 416
		video WS	320 x 180	320 x 180	320 x 180	640 x 360	320 x 180	640 x 360
		slide	640 x 480	640 x 480	-	-	-	320 x 240

Figure 4: Dimensions (in pixels) of the presentation window, media and sync regions in the PM3 interface

	Presentation window		even	small-large	large-small	single
Accordent SL3	1012 x 670	video	480 x 360	320 x 240	640 x 480	640 x 480
		slide	480 x 360	640 x 480	320 x 240	640 x 480

Figure 5: Dimensions (in pixels) of the presentation window, media and sync regions in the SL3 interface

Requirements and Compatibility

Below are the Operating System and Browsers supported by the default UI. For a comprehensive and more detailed list of User Interfaces and supported OS and, please refer to the Accordent Default UI Compatibility Chart on our support portal:

<http://support.accordent.com>

Microsoft Windows OS

- Windows XP/Vista/7
 - Internet Explorer 7/8
 - Firefox 3

Apple Mac OS

- Mac OS 10.5
 - Safari 3/4
 - Firefox 3
- Mac OS 10.6
 - Safari 4
 - Firefox 3

Monitor resolution:

A monitor resolution of 1024x768 pixels or above is required to watch presentations created using the Accordent default UI.

RAM:

The amount recommended by the selected OS (preferably not less than 1GB).

Accordent PM3



Figure 6: The Accordent PM3 interface

Description

Formerly called Accordent Professional, the Accordent PM3 user interface (Figure 6) is our flagship user interface and represents the most robust and fully featured interface that's available for webcasting. A highly customizable interface, it offers the content creator several default options for creating a completely unique look and feel such as changing the background image and logo. This interface uses the power and flexibility of CSS, JavaScript and XHTML, and has been designed to comply with web standards and accessibility guidelines for true cross-browser compatibility. Because the Accordent PM3 interface is available across all Accordent content creation products, this is an ideal solution for most uses.

With version 3.2, the Accordent PM3 interface introduces several important improvements:

Flash Video Support. The Accordent PM3 interface newly supports the FLV and MP4 video formats. For content creators using these formats, the Accordent PM3 interface utilizes a Flash-based media player.

Multiple Q&A modes. The Q&A feature for Capture Station™ and PresenterPRO™ can now be configured to one of three modes: Default mode captures a user's name, email address, and question (all fields are required in this mode); Anonymous mode allows a user to submit a question anonymously without providing their name or email address; OnlyQuestion mode only displays the question field to the user.

Additional AMMS integration features. Newly introduced tags in this version enhance the integration capabilities of the Accordent PM3 interface. The "RequireAMMS" tag allows the presenter to publish a secured presentation that can only be launched from the Accordent Media Management System. The "ExternalId" maps the unique ID given to the presentation in AMMS to allow third party software integration.

Increased media type support. The Accordent PM3 interface newly supports .flv and .mp4 video formats in PresenterPLUS and .mp4 format in CaptureStation (.mp4 allows H.264 video compression). When these video formats are used the Accordent PM3 interface combines the ubiquity of Flash video with the flexibility and convenience of HTML delivery. With this version, the PM3 supports Windows Media as well as MP3, RealPlayer and Flash video formats, replacing the need for the previous Accordent Professional (Flv) interface.



Figure 7: Clockwise from upper left: Windows Media, Real Media, Flash, Silverlight

Custom Launch Page Background. The background image of the launch page can now be modified via custom tag.

Features

Live, On-Demand, and Local modes – The Accordent PM3 user interface available in all Accordent content creation applications is capable of handling live and on-demand presentations in Capture Station™ and PresenterPRO™, and on-demand or local presentations in PresenterPLUS™. Certain features in the interface will be enabled or disabled depending on the mode, such as user Q&A during live mode or thumbnails during on-demand mode.

Capture Station™ supports live presentations and archives an editable version for archive and on-demand consumption. PresenterPRO™ also supports live presentations but also provides some basic post-production editing capabilities, such as adding or removing chapter points or cropping your media file. PresenterPLUS™ creates on-demand presentations from an available media file, but can also be used to edit archived presentations from Capture Station™ or PresenterPRO™. Additionally, PresenterPLUS™ can burn archived presentations to a CD.

Swap Video and Slide – This is a real-time feature in the Accordent PM3 user interface which allows the user to swap the positions of the media and sync regions when it is *not* an audio-only presentation. When

this button is pressed, the sync and video elements are transposed – the video enlarges to fill the space of the slide region, and the sync shrinks to fit in the video space. Pressing the button again will restore the original layout. This feature is only available in the “default” and “videoright” layout modes. With some simple JavaScript modification, an interface can also be configured to launch in the swapped position by default. See *Swapped Regions by Default* in the Customization section for more information.

Multiple Layouts – With up to six different functional layouts to select from, the PM3 user interface is a highly flexible solution that meets a range of needs.



Default (default)

This standard configuration displays the media and sync regions and makes use of a tabbed module for displaying meta-data, a list of chapters, and other additional features that the user interface may offer. The media is located to the left of the sync region and the tabbed module sits underneath the media.



Swapped (swapped)

This mode swaps the media and sync regions by default, making use of a larger video and smaller sync region at launch. The “swap” button is still available as a real-time feature in the interface, which toggles back to the “default” layout when clicked.



Mirrored (videoright)

This mirrored image of the default configuration relocates the media to the right of the sync region. All other features of the default mode are retained. This layout is useful if you are capturing an event where the presenter is positioned to the right of a projector and gestures are made towards the slides.



Large Video (largevideo)

The Large Video mode removes the sync region and all related functionality. Without resizing the dimensions of the interface, this mode makes use of the extra space by enlarging the media region. This layout is useful when you need to deliver a video only presentation, but still provide the features and benefits of the tabbed region.



No Slides (noslide)

Like the Large Video mode, this mode removes the sync region and all related functionality, but does not resize the video and maintains the tabbed region underneath the media region. Because of its reduced width, the title of the presentation is not displayed in the *header* and footer information is reduced.



Only Video (onlyvideo)

This bare-bones mode only displays the media and a toggle for closed captions if available. The viewer still has the option to zoom the video to full screen, but the tabbed region underneath the video is not shown. Because of its reduced width, the title of the presentation is not displayed in the header and footer information is reduced.

Figure 8: Accordent PM3 layouts

Video Aspect Toggle – The media region can handle both standard (4:3) and widescreen (16:9) aspect ratios. Standard aspect is the default setting, but widescreen video is supported through a simple custom tag toggle (Figure 9). See the *Layouts and Dimensions* chart for details on widescreen video sizes according to each layout.

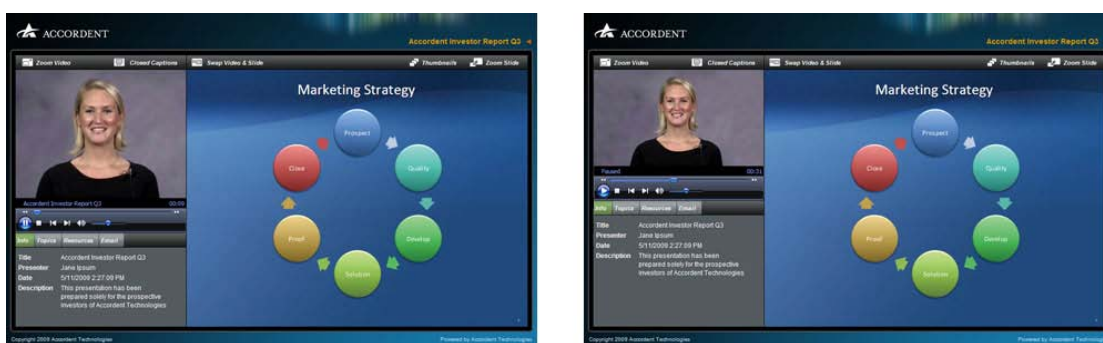


Figure 9: Standard versus Widescreen aspect ratio

Multiple Bandwidths – Capture Station™ and PresenterPRO™ are both capable of supporting up to three different bandwidths per media type. Because these applications have a default encoder profile, the PM3 user interface has been pre-configured to use both video and audio in the high and medium bandwidth streams, and audio only in the low bandwidth stream.

Multiple Formats

- **Windows Media** – Windows Media Video (.wmv) and Audio (.wma) are proprietary media formats developed by the Microsoft Corporation. Because this format is installed by default with all Windows-based PCs, they are widely recognized and usually require no additional plug-ins for the end user to download and install. When viewing a presentation on Internet Explorer, the Accordent PM3 user interface will utilize an embedded Windows Media Player for an optimal web experience. When viewing a presentation on non-Internet Explorer browsers, the Accordent PM3 user interface will take advantage of the Silverlight framework to display the media stream. The Silverlight plug-in is free to download and install from Microsoft and available for all supported browsers. Silverlight offers non-Internet Explorer users a nearly identical feature set and viewing experience as Internet Explorer users.
- **Real** – Real video (.rm) and audio (.ra) formats was created by Real Networks and supported on many operating platforms like Windows and Mac. Like Windows Media, Real is a popular and reliable streaming format and available as a free download to the end user. This format is not typically installed on most operating systems, but offers the same feature set and experience across all browsers when used.

- Flv and Mp4 – Flash video (.flv) is a very ubiquitous video format and a preferred video delivery format by many organizations. Developed by Adobe Systems, Flash is capable of supporting the H.264 codec when .mp4 is used. It does require an end-user to have the Flash plug-in installed, but like Silverlight it is freely available from the Adobe website. PresenterPLUS and CaptureStation can produce Flash presentations.



The different players used by the Accordent PM3 interface

Pre-publishing – Capture Station™ is capable of “pre-publishing” an interface to a content location before an event starts. This feature allows the presenter to open a stand-by window before the start of a live event by uploading the interface files to a content location before any encoder streams are started. While inside the pre-publish window, users trying to access the event will simply see a generic wait message on the event launch page (Figure 10). The launch page will refresh every sixty seconds until the event has been started by the presenter, after which event links to launch the interface will appear.

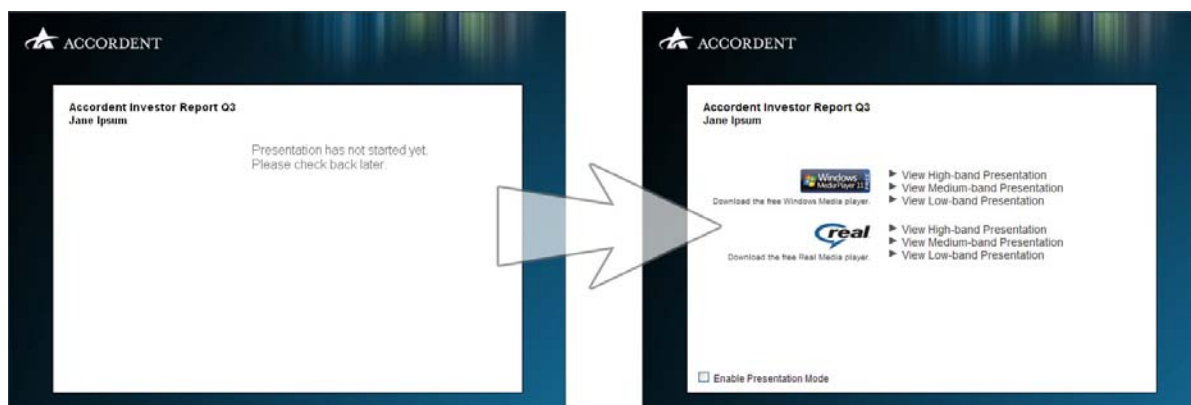


Figure 10: The pre-publish window shows a wait message until the presentation is started

Interface Header Image – You may replace the default header image in the interface with a custom branded image of your own, such as one of your organization’s logo. The image you define in this tag will replace the Accordent logo image in the header. The header region in the interface will accommodate an image up to 997x61 pixels (Figure 11), and has been pre-configured with a left-justification and no tiling.

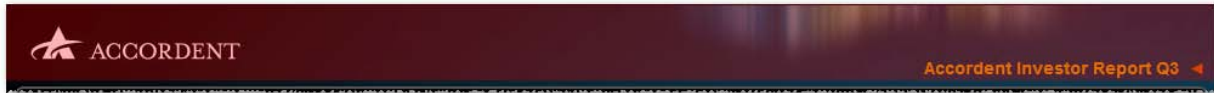


Figure 11: The custom header image in the interface can be as large as the area shaded in red

Interface Background Image – You may replace the default background image (Figure 12) with a custom branded image of your own. The image you define in this tag will replace the Accordent background image in the interface. The background image will accommodate an image up to 997x624 pixels. This image has been pre-configured to tile, so you may create a pattern swatch and have it repeat along both the X- and Y- axis.



Figure 12: The default background image

Launch Header Image – You may replace the default header image in the launch page with a custom branded image of your own, such as one of your organization’s logo. The image you define in this tag will replace the Accordent logo image in the launch page. The header region in the launch page will accommodate an image up to 700x75 pixels (Figure 13), and has been pre-configured with a left-justification and no tiling.



Figure 13: The custom header image in the launch page can be as large as the area shaded in red

Launch Background Image – You may replace the default background image in the launch page (Figure 14) with a custom branded image of your own. This image has been pre-configured to tile, so you may create a pattern swatch and have it repeat along both the X- and Y- axis.



Figure 14: The default launch background image

Registration – PresenterPRO™ is capable of publishing presentations that require registration before a user can view it (Figure 15). Registration data is collected in the same content location where a presentation is published to, but this data can also be viewed from the Presentation Manager in PresenterPRO™. This feature is *not* enabled by default and will require some slight modification to the code. See *Enabling Registration* in the Customization section for instructions on enabling registration.

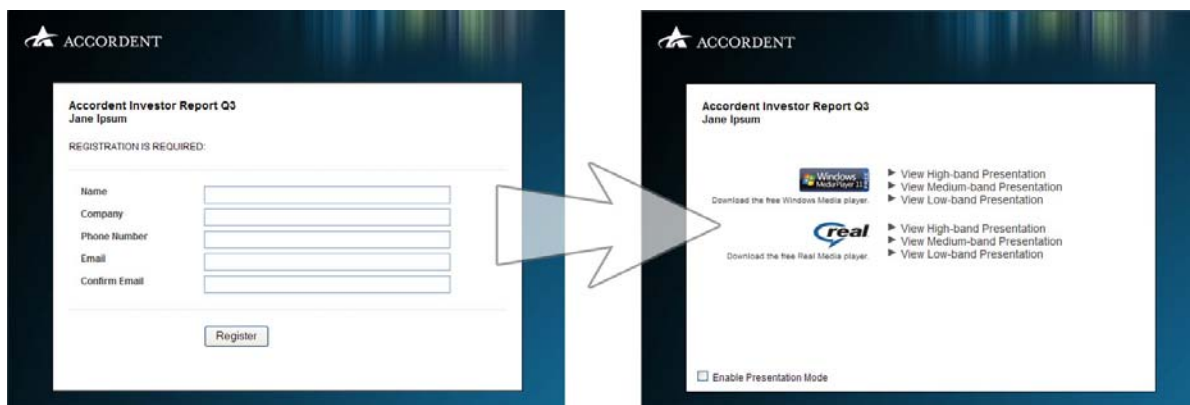


Figure 15: When enabled, viewers must first complete a registration form before the interface can be viewed

Audio-Only Overlay Image – When using the multiple-bandwidth feature in Capture Station™ or PresenterPRO™, the low bandwidth option has been reserved for an audio-only stream in the default encoder profile. You may customize the image (Figure 16) that appears in the video region of the low bandwidth stream, such as a static image of the speaker or a logo. If no image is customized, a default image of an audio icon is used.

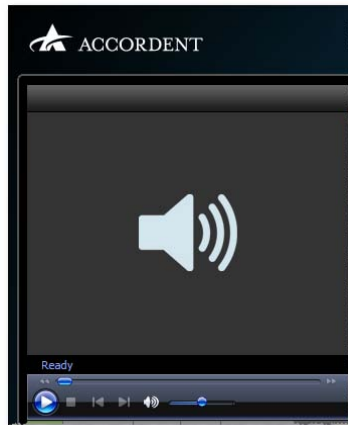


Figure 16: The Windows Media Player in Audio Only mode

Closed Captions (CC) – Closed captioning is available for Windows Media presentations created in Capture Station™ and PresenterPRO™ and both Windows Media and Real in PresenterPLUS™. It can be either enabled or disabled in a presentation. When enabled, closed captioning text is shown underneath the video region. While enabled, you can show or hide the captioning text in real-time within Windows Media based presentations.

Fullscreen Mode (Presentation Mode) – When this feature is checked in the launch page, the presentation will launch in a fullscreen view. The interface will be centered to your screen over a black background. No other screen elements are visible in this view. This feature is only available on Internet Explorer.

MP3 – Capture Station™ and PresenterPRO™ are both capable of archiving an on-demand presentation with an additional MP3 audio format. If available, an MP3 version will be available on the launch page of an archived presentation. The MP3 interface (Figure 17) does not contain syncs, but any presentation meta data is displayed. For iTunes users, a convenient one-click subscription link adds the presentation as a downloadable podcast. MP3 is also available in PresenterPLUS™ as a stand-alone user interface.

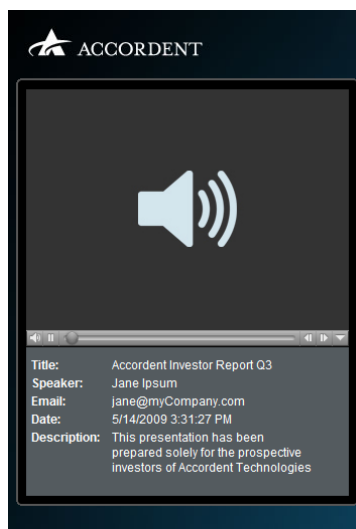


Figure 17: The Accordent PM3 MP3 interface

Event Meta Data – Meta data fields provide descriptive text for a presentation and also serve as keywords for searching when used with the Accordent Media Management System™. These fields are available by default:

- Presentation Title
- Presentation Speaker
- Presentation Date/Time
- Presentation Description

Email – If an email address is provided, the PM3 interface will enable an “Email” tab. Clicking the email link will launch the default email client on the operating system, and the subject will be pre-defined with the title of the presentation. This tab will not display if no email is provided.

Q&A – The Q&A feature can be enabled for live Capture Station™ or PresenterPRO™ presentations and it can be Moderated or Email driven (PresenterPRO only). If enabled, a “Q&A” tab will be available on the interface. The form will display a “thank you” message and return the viewer back to the form after a few seconds. This feature is only available for live presentations, and is automatically disabled when a presentation is archived. Q&A can be configured to display in one of three modes:

- Default – this mode requires the user to provide their name and email address along with their question.
- Anonymous – this mode enables the name and email fields, but does not require the user to enter this information when submitting a question (available only for moderated versions of Q&A).
- OnlyQuestion – this mode disables the name and email fields and only displays the question field to the user. It is commonly used in conjunction with AMMS or a registration enabled event where the name and email can be retrieved from the session.

Moderated Q&A Web Console – This utility can be used in conjunction with the moderated Q&A feature in an interface and provides a moderator the functions necessary to manage questions received during a live event. A password protected link to the web console can be found on the launch page of a Capture Station™ presentation. This password can be changed from a custom tag within Capture Station™ or in the Q&A section of the Interface Options of the PresenterPRO™ application. This web console link is disabled after a presentation has been archived.

Resources – The “Resources” tab house extra files or links that can provide supplemental information beyond the content of a presentation. While creating the presentation, you can add up to three files or define up to three links. Capture Station™ and PresenterPLUS™ allow you to locate these files on your computer and upload it to the content server along with the rest of the interface files. PresenterPRO™ requires you to provide absolute paths to files that can be accessed via the web. Resource links will open in a new browser window. The “Resource” tab will not display if no resources are provided.

Topics (Chapters) – The “Topics” tab is only enabled for archived or on-demand presentations and provides a chronological list of bookmark points in a presentation. Bookmark points are created a few different ways: 1) In Capture Station™, each screen capture creates a bookmark. It does not matter if the screen capture is created automatically or manually. 2) In PresenterPRO™, each sync event automatically creates a bookmark. Slide flips, URL pushes, and Interactive pages are all sync events. A chapter list can be edited in the Archive Wizard of PresenterPRO™. 3) In PresenterPLUS™, each sync

event can be paired with a bookmark. Bookmarks can also be added independently of sync events in PresenterPLUS™. The “Topics” tab can be disabled entirely from a custom tag toggle.

Thumbnails – Where available, a thumbnail of each sync event is automatically created with the slide itself. This is true when the slide is based off of any image or converted from a PowerPoint deck or PDF document. For URL or Flash media sync events, a generic icon is used as a thumbnail. Like the “Topics” tab, the thumbnail button is only available in archived or on-demand presentations. When the thumbnail button is pressed, a small pop-up window (Figure 18) displays a chronological list of thumbnails. Unlike the chapter list, however, each thumbnail must be paired to a sync event. The thumbnails window can be paginated depending on the number of thumbnails to display per page via a custom tag. If no value is provided, the Thumbnails feature is disabled.

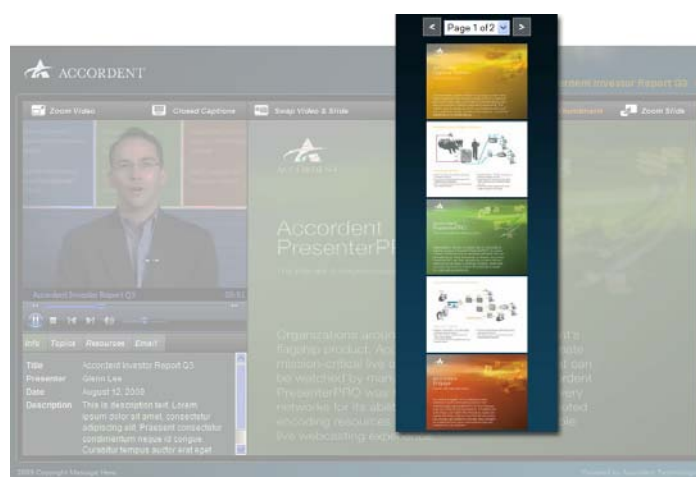


Figure 18: Thumbnails pop up in a new window over the interface when launched

Syncs – The sync region is a multi-functional region that updates with slide- and URL- sync events. In PresenterPRO™, you can also target interactive pages to this region. This region has a display size of 640x480 pixels, so content that exceeds this size will show scrollbars. The PM3 interface also incorporates smart technology that retrieves the last slide synced during a live event if the viewer launches a presentation after it has begun. For archived or on-demand presentations, if the viewer uses the scrub bar of the media player to move to any point in the presentation, the nearest sync event not past the scrub time will be fetched and displayed even before the video re-buffers.

Zoom Video – When this button is pressed, the video is zoomed full screen. Pressing the “Escape” key returns the presentation to a windowed view.

Zoom Slide – When this button is pressed, the current slide is zoomed full screen. Only slides can be zoomed. While in the zoomed view, slide sync events will continue to update. Pressing the “Escape” key or clicking the screen returns the presentation to a windowed view.

Footer Text – Footer text consists of a copyright notice and a link to Accordent Technologies online in the footer region. The copyright message can be configured from the publishing application. Because of the reduced width, some footer text may be hidden in the “noslide” and “onlyvideo” modes.

Auxiliary Mode – PresenterPRO™ includes an auxiliary mode that launches the interface without a media player. This mode is useful for in-room or dial-in attendees of a presentation. In these situations,

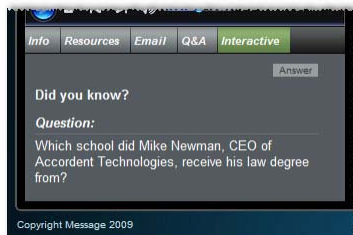
the media player would not be needed, but a viewer would still have the benefit of the Accordent PM3 interface for resources, metadata, etc. This mode is only available for live presentations.

Interactivity – PresenterPRO™ includes built-in interactive pages (Figure 19) that can be used during a live event. Interactive pages provide additional types of sync events that send information to or collect information from the viewer. If available, the “Interactive” tab is enabled and sync events of this type are displayed in this panel.



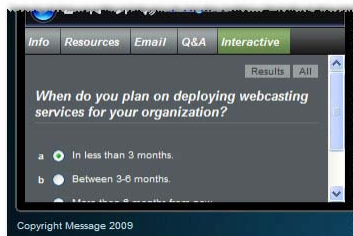
Fact

A Fact page is simply text that is sent to the viewer.



Trivia

A Trivia page consists of a question and answer, but the viewer must click on an “answer” link before the answer can be seen. Alternatively, you can also send a question without a link to view the answer.



Survey

A Survey page sends a multiple choice question to the viewer. You may prepare up to six multiple choice answers to select from. After the viewer submits their answer, they will have the option to view a percentage-based results page.



Question & Answer

Like a Trivia page, a Q&A page also consists of a question and answer, but both are simultaneously displayed for the viewer. During a live event with Q&A enabled, this is one way for a presenter or moderator to provide feedback to the audience online.



Photo

A Photo page sends an image to the viewer.



Clear

This page can be used if you want to clear the previous interactive sync from the presentation window. This is also the page that viewers will see before any interactive syncs are sent.

Figure 19: PresenterPRO interactive features

Require AMMS – This feature allows a presentation to be secured to an AMMS portal. When enabled, the presentation *must* be launched from an Accordent Media Management System or the presentation window will fail to open.

External ID – The ExternalId tag allows presentations to be associated with an external identifier, which will also be scanned and stored by AMMS. Presentations with an ExternalId can be used in conjunction with CME, AVITEM, or other third party solutions.

Customization

The Accordent PM3 interfaces offers flexibility by allowing you to change background and logo elements right out of the box. But even beyond these customization features, its CSS based design and JavaScript-powered functionality allows even further modification for a truly unique purpose or style. The Accordent PM3 interface in PresenterPRO™ also includes a registration feature that can be enabled via some simple JavaScript code modification. In the case of any code changes, it's always a good idea to make a backup copy of the interface being modified.

Custom Tags (Advanced Tags)

The Custom Tags (Advanced Tags) screen of each application allows a presenter to easily change the interface background image or logo image used in the header of both the launch and interface pages and the color of the header text. In all applications, leaving these tags empty will make the interface default to Accordent images and colors.

Capture Station™

1. Select the Accordent PM3 interface from the “Default” group in the “Interface Style” drop-down menu.
2. In the “Presentation Details” list, scroll down to the four tags that define the interface background, header, and launch header images, as well as the header text color (Figure 20). Click on the “Browse” button to use a local image file. This file will be uploaded along with the rest of the interface files to the content directory. Image size information will be given in the description text of each tag. To change the header text color, enter a new hex value, or “none” to hide the header text entirely.

Custom Tag	Value	
Video Aspect	standard	
Presentation Layout	default	
Topics Tab	yes	
Audio-Only Overlay Image		Browse
Template Background Im...		Browse
Template Logo Image		Browse
Launch Logo Image		Browse
Header Title Color		
Thumbnails Pagination	25	
Copyright	Copyright Message Here	
Closed Captioning		

Figure 20: These images can be customized from the "Presentation Details" list in Capture Station™...

PresenterPLUS™

1. Select the Accordent PM3 interface from the "Choose Skin" tab.
2. Click the "Customize Skin" tab.
3. Scroll down to the four tags that define the images used for the interface background, header, and launch header images, as well as header text color (Figure 21). To change the default images, click on the "Browse" button to use a local image file. This file will be uploaded along with the rest of the interface files to the content directory. Image size information will be given in the description text of each tag. To change the header text color, enter a new hex value, or "none" to hide the header text entirely.

Custom Tag	Value	
Audio-Only Overlay Image		Browse
Template Background Im...		Browse
Template Logo Image		Browse
Launch Logo Image		Browse
Header Title Color		
Thumbnails Pagination		

Figure 21: ...in the "Customize Skin" tab in PresenterPLUS™...

PresenterPRO™

1. Select the Accordent PM3 interface from the "Interface Options" panel of the Presentation Wizard.
2. Click the "Advanced" button.
3. Scroll down to the four tags that define the images used for the interface background, header and launch header images, as well as the header text color (Figure 22). Enter the URL where custom images can be referenced from within the published interface in the "Edit Options" section. This URL should be an absolute path, and should not have any permission or security settings that might prevent a presentation from referencing it. Image size information will be given in the description text of each tag. To change the header text color, enter a new hex value, or "none" to hide the header text entirely.

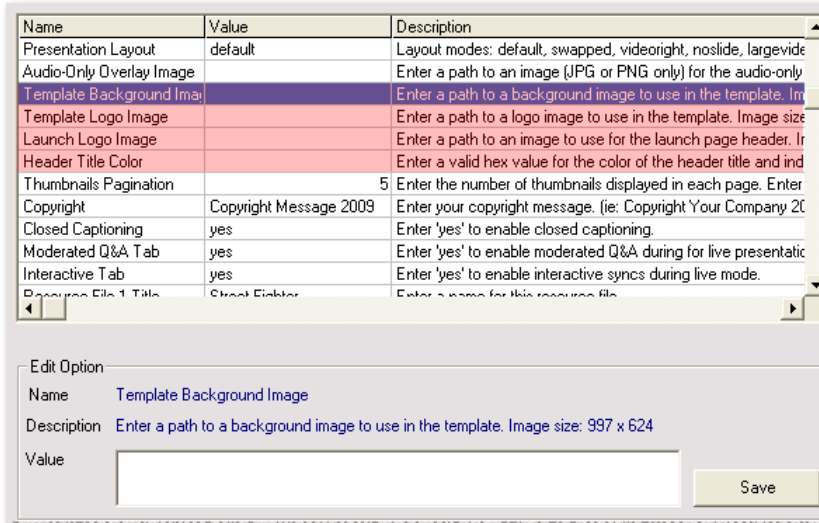


Figure 22: ...and finally in the “Advanced” options in PresenterPRO™

CSS

The Accordent PM3 interface uses a few CSS files to achieve its look and feel. With some CSS experience and a firm grasp of what each file does, the possibilities are virtually endless.

- dhtml.css – Controls the position of the interface elements as they pertain to each layout mode and feature (swapping, closed captions toggle, etc). Most customizations will not require any modification to this file.
- styles.css – This is the main CSS file and controls most of the color, style, margin, padding, visibility and spacing properties throughout the interface. This document will probably be the main focus of any customization effort.
- launch.css – Controls the styles of the launch page.
- thumbnails.css – Controls all the styles in the thumbnail pop-up window.
- mp3.css – Controls all the styles in the MP3 interface.

The following are some pure CSS modifications you can perform just to get started.

Stylized Scrollbars – Scrollbars will be visible in certain areas of the interface where the content is larger than its container, such as the tabbed panels. You may want to stylize the scrollbars (Figure 23) with custom colors, but be aware that some browsers do not recognize these properties.



Figure 23: A standard, unstyled scrollbar (left) vs. one that has been styled through CSS (right)

1. Open styles.css.
2. Uncomment the HTML style block between lines 13-21.

```

13  /*html {
14      scrollbar-arrow-color:#999999;
15      scrollbar-track-color:#ffffff;
16      scrollbar-face-color:#d7d7d7;
17      scrollbar-highlight-color:#ffffff;
18      scrollbar-3dlight-color:#aaaaaa;
19      scrollbar-darkshadow-color:#aaaaaa;
20      scrollbar-shadow-color:#ffffff;
21  } */

```

3. A few custom colors have already been applied. Simply replace the hex codes in each property of the scrollbar to create a unique style. Like the Opaque Matte effect above, creating a custom style for the scrollbars will cause this CSS sheet to not validate.

Removing the Matte – The black matte surrounding the interface modules can also be removed via CSS if desired (Figure 24).

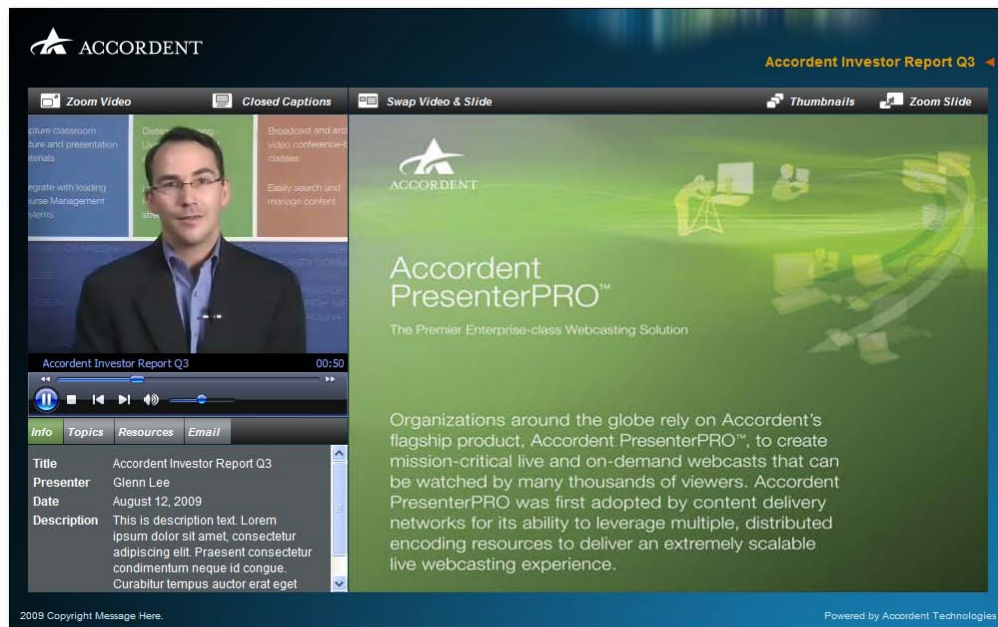
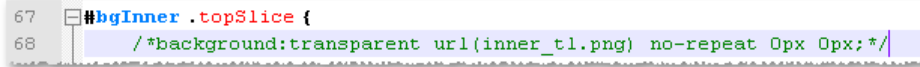


Figure 24: A presentation with the black matte removed

1. Open styles.css.
2. Look for the style named “#bgInner .topSlice” (line 67).
3. Comment out the “background” property (line 68). The entire line must be commented out.



```

67 #bgInner .topSlice {
68 /*background:transparent url(inner_tl.png) no-repeat 0px 0px; */

```

4. Repeat the first three steps for the following styles: “#bgInner .topSlice .corner”, “#bgInner .bodySlice”, “#bgInner .bodySlice .corner”, “#bgInner .footSlice”, “#bgInner .footSlice .corner”

Hover Color of Buttons – The feature buttons (Zoom Video, Zoom Slide, Thumbnails, etc.) and tabs (Topics, Resources, Email) on the module headers have a default hover color of yellow (hex: #ffcc00). You may change this hover color easily from the CSS.

1. Open styles.css.
2. Look for the style named “.moduleHeaderControls a:hover” (lines 153-154).
3. Change the hex value of the color property.

Hover Color of Links – Most links - bookmarks, resources, etc. - also have a default hover color of yellow (hex: #ffcc00). Like the hover color of buttons, this can be easily modified.

1. Open styles.css.
2. Look for the style named “a:hover” (line 33).
3. Change the hex value of the color property. Notice that the hover style also has an underline property as well. To remove the underline for the hover state, simply remove this “text-decoration:underline” property.

Padding Between Modules – Because the Accordent PM3 interface uses a healthy 320x240 size for video and 640x480 size for slide syncs, the components are tightly grouped in order to maximize the window space on a typical 1024x768 monitor resolution. Modifying these values require a fairly comprehensive understanding of how the CSS files affect the interface and is only recommended for users with HTML and web development experience.

In the following instructions, we will add a 10 pixel padding space between the media, sync and tabbed regions of the user interface in the default layout mode (Figure 25). The dimensions of the interface will necessarily gain a little bit of width, but we will maintain the flush alignment of the bottom of the sync and tabbed regions. Additionally, the sync and media regions are floating elements that are absolutely positioned on the interface for swapping. We will also adjust the position of these elements as a result of our padding. Finally, these instructions will assume that a new background image has already been created to fit the new size of the interface.

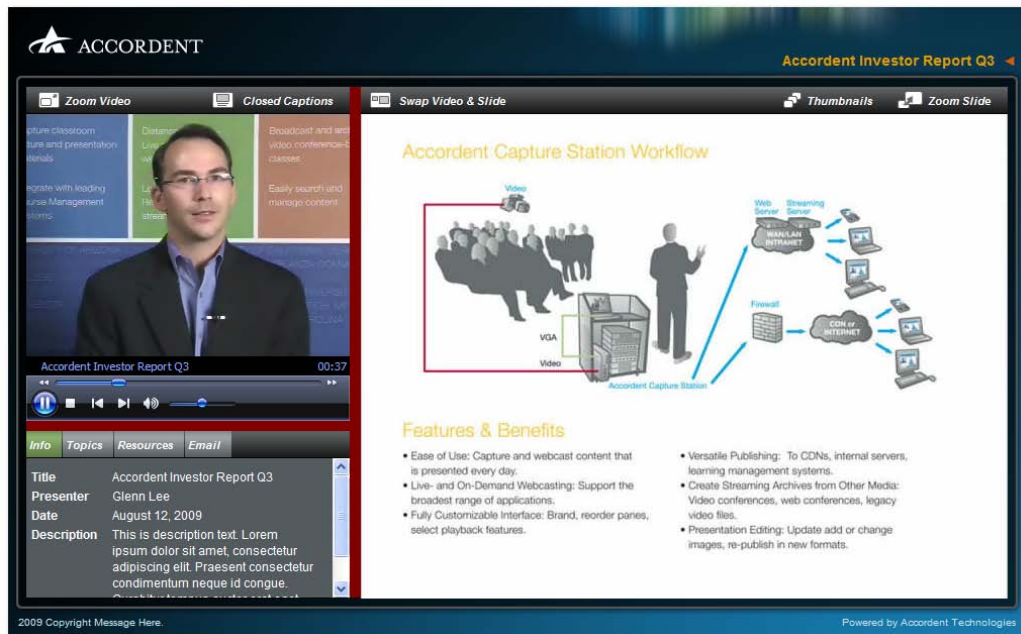


Figure 25: The interface after padding (highlighted in red) has been applied

Step 1 – Make the interface wider

1. Open styles.css.
2. Look for the style named “.presoWidth” (line 9) near the top of the file. This property defines the overall width of the interface and is 997px by default. Since we are adding a 10 pixel padding space between the media and sync and tabbed regions, change it to 1007px.
3. Look for the style named “.presoClip” (line 11) near the top of the file. This property clips any content beyond the dimensions of the interface. Since we have increased the width, we will allow for this additional size in the clipping property. Change the “clip” property from “rect(0px,997px,624px,0px)” to “rect(0px,1007px,624px,0px)”.

```

8  /* presentation width and height. define as necessary for custom skins */
9  .presoWidth {width:1007px;}
10 .presoHeight {height:624px;}
11 .presoClip {clip:rect(0px,1007px,624px,0px);}
```

Step 2 – Add vertical padding between the sync and media regions

1. While in styles.css, look for the two styles named “.slideR3Group” and “.slideR3Group_mirrored” (lines 108-109).
2. Increase the “margin-left” property from 1 pixel to 10 pixels.

```

108 .slideR3Group {position:relative;margin-left:10px; /*margin-bottom:-3px;*/}
109 .slideR3Group_mirrored {position:relative;margin-right:10px; /*margin-bottom:-3px;*/}
```

Step 3 – Add horizontal padding between the video and tabbed regions

1. While in styles.css, look for the style named “#r2Layer” (line 104).
2. Increase the “margin-top” property from 1 pixel to 10 pixels.

```
109 #r2Layer {overflow:auto;margin-top:10px;}
```

Step 4 – Adjust absolute positioning of floating sync and media elements

1. Open dhtml.css.
2. Look for the style named “.region1” (line 17).
3. Add 10px to the “left” property. The new value should be “left:349px;”. This will move the sync region an additional 10 pixels from the left.

```
17 .region1 { left:349px; top:106px; }
```

4. We will also need to take into account the closed captioning feature and the video region when it is swapped. Add 10px to the “left” property of the following styles: “.region1_captioned”, “.video_swapped”, “.video_swapped_captioned”, “.sl_video_swapped”, “.sl_video_swapped_captioned”. Take care to also do this for the respective styles for widescreen mode, beginning on line 139. All widescreen styles begin with a “.ws_” prefix.

Step 5 – Reduce height of tabbed panel

1. While in dhtml.css, look for the group of styles between lines 113-121.
2. These styles control the height of the tabbed panel under different states. Subtract 10px from both the height and the two clip properties for these styles. For example, the properties for “.r2tall” should be changed from

```
height:192px; clip:rect(0px 192px 310px 0px); //clip:rect(0px,192px,310px,0px);
```

to

```
“height:182px; clip:rect(0px 182px 310px 0px); //clip:rect(0px,192px,310px,0px);”.
```

3. Repeat the first two steps for the following styles: “.r2normal”, “.r2short”, “.sl_r2tall”, “.sl_r2normal”, “.sl_r2short”. Notice that you do not need to change the “.r2xtall” and “.sl_r2xtall” styles. Those styles are only used in the largevideo, where the tabbed panel takes the full height of the video. However, take care to also do this for the respective styles for widescreen mode, between lines 228-239.

```

113 .r2xtall { height:460px; clip:rect(0px 460px 310px 0px); // clip:rect(0px,460px,310px,0px); }
114 .r2tall { height:182px; clip:rect(0px 182px 310px 0px); // clip:rect(0px,182px,310px,0px); }
115 .r2normal { height:118px; clip:rect(0px 118px 310px 0px); // clip:rect(0px,118px,310px,0px); }
116 .r2short { height:54px; clip:rect(0px 54px 310px 0px); // clip:rect(0px,54px,310px,0px); }
117
118 .sl_r2xtall { height:460px; clip:rect(0px 460px 310px 0px); // clip:rect(0px,460px,310px,0px); }
119 .sl_r2tall { height:182px; clip:rect(0px 182px 310px 0px); // clip:rect(0px,182px,310px,0px); }
120 .sl_r2normal { height:182px; clip:rect(0px 182px 310px 0px); // clip:rect(0px,182px,310px,0px); }
121 .sl_r2short { height:118px; clip:rect(0px 118px 310px 0px); // clip:rect(0px,118px,310px,0px); }

```

Step 6 – Define the new size of the presentation window

1. If PLUS, open index.htm.
2. Look for the function named “playMS” (line 70).
3. There will be an if-else statement that handles launching the interface in fullscreen mode or to a window. When launching to a window, the function passes height and width parameters. Adjust the width parameter by adding an additional 10 pixels.

```

77 function playMS() {
78     var url = 'main.htm' + window.location.search;
79     if (formChk()) {
80         Lvl_openWin(url, 'presMode', '0', '0', '0', '0', '0', '0', 'fullscreen=1');
81     } else {
82         Lvl_openWin(url, 'wgh', '1007', '624', '0', '0', '1', 'width=1007,height=624');
83     }
84 }

```

4. NOTE: If modifying the PRO interface, open links.htm instead and follow the first three steps.
5. NOTE: If modifying the Capture Station™ interface, simply open details.txt and provide the dimensions of the interface window in the “windowwidth” and “windowheight” tags. No modification to index.htm is necessary.

```

51 windowwidth:
52 1007
53 windowheight:
54 624

```

Images

Whereas the background and logo images can be easily changed via the custom tags menu, changing other visual elements will require editing on the source image file itself. It is recommended that you stay within the confines of the default image sizes if you do make any modifications. Some images are tiled as the background of an element (such as runner.gif and nav_bg.gif), so only a sliver is used in order to minimize file size. Other graphical elements are contained in a sprite file (such as sprite_icons.gif) in order to reduce the number of calls made to a server. Aside from the background, logo and matte images, Figure 26 shows the rest of the images that make up the PM3 interface.



Figure 26: Images that make up the rest of the interface

Enabling Registration (PresenterPRO only)

The PM3 interface in PresenterPRO supports user registration, but this feature is disabled by default. To enable it, two simple changes to the code must be made.

1. Open details.txt.
2. Change the value of the REGISTRATION tag from 0 to 1.

```
51 REGISTRATION:
52 1
```

3. Open launch.js.
4. Look for the variable named “regMode” (line 3) and change its value from “false” to “true”.

```
1 // if regMode is set to true, registration
2 // mode MUST be set to 1 in details.txt!!!
3 var regMode = true;
```

Fullscreen Mode for OnlyVideo Layout

The onlyvideo layout mode has the additional option of automatically launching to fullscreen with just a slight modification to the code. This mode essentially triggers the built-in fullscreen option for Windows Media, Silverlight, and RealPlayer.

1. Open lm.js
2. Look for the variable named “launchOnlyVideoFS” (line 3) and change its value from “false” to “true”.

```
3 var launchOnlyVideoFS = true;
```


Accordent SL3

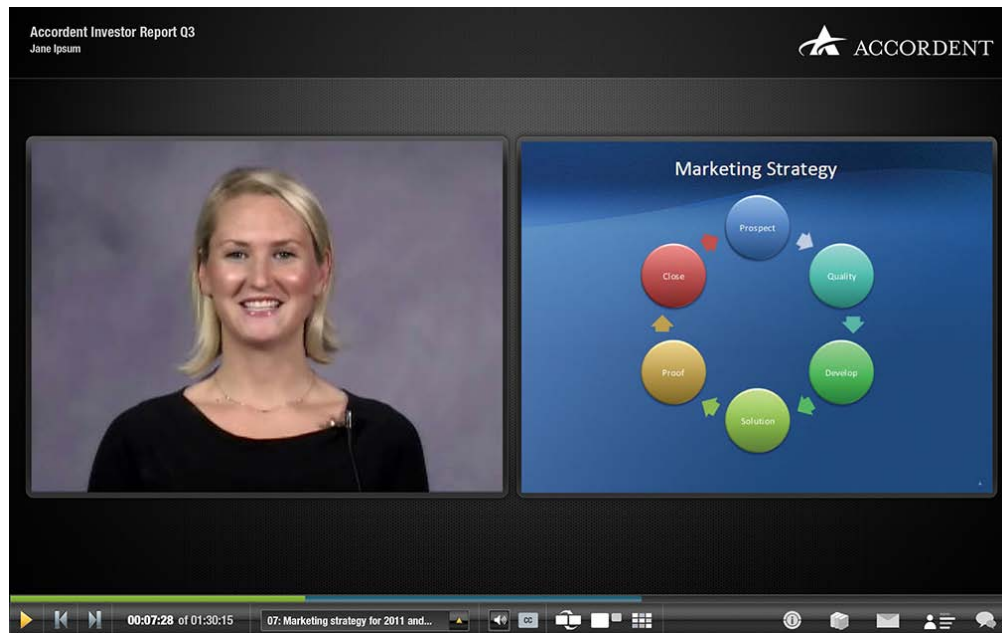


Figure 27: The Accordent SL3 interface

Description

The Accordent SL3 user interface (Figure 27) is a new offering by Accordent Technologies and replaces the previous Accordent Professional (Silverlight) UI. Like its predecessor, the Accordent SL3 interface is driven by Silverlight technology and relies on the Silverlight v.3 plug-in (or above) to view. This interface is new in form as well as function, although it shares many of the same features as the Accordent PM3 interface. Because it uses the Silverlight plug-in, the user experience is exactly the same across all major browsers and operating systems. Like the Accordent PM3 interface, this interface is available across all of Accordent's content creation products.

With this release, the Accordent SL3 interface introduces the following features:

Consolidated features bar. The convenient features bar in the SL3 interface houses all of the functionality that the user can perform on the UI. This includes the media display and navigation controls, layout and positioning controls, and the feature panels such as Event Info, Resources, Moderated Q&A, etc.

User configurable layouts. The SL3 interface puts the power to change layouts in the hands of the user. The layout panel includes 4 different layout options and can be accessed from the features bar. The layout icons represent how the current layout will be modified, but does not swap the position of the media and sync panels. That function is accomplished with the swap button, and is located next to the layout panel. The swap button swaps the current position of the media and sync panels, but retains their respective sizes.

Chapter search and sorting. The SL3 interface introduces a new chapter search capability offered for the first time on any Accordent interface. The chapter panel incorporates a built-in search bar that returns

results in real-time as the user types. Chapter titles that match the user's search string are filtered from the chapter list. Additionally, the user can also sort the chapter list chronologically or alphabetically by clicking the respective icon next to the search bar.

Redesigned launch page. A redesigned launch page includes a few new improvements and additions. Important metadata like the presentation title and speaker is still visible, but a convenient status indicator lets you know if the presentation is live or on-demand. A speaker image can also be added to the presentation, which will display on both the launch page as well as the Event Info panel on the skin.

Features

Live and On-Demand modes – The Accordent SL3 user interface is available in all Accordent content creation applications, and as such is capable of handling both live and on-demand presentations in Capture Station™ and PresenterPRO™. Certain features in the interface will be enabled or disabled depending on the mode, such as moderated Q&A during live mode (for PresenterPRO™) or the chapter panel and thumbnails button during on-demand mode. New to the SL3 interface is an indicator icon (Figure 28), which is used to display the current mode on the launch page.

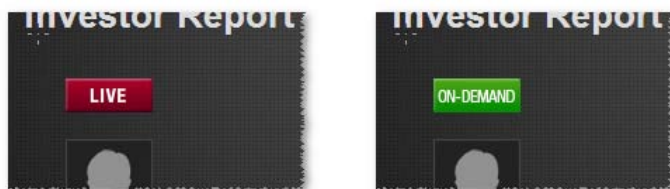


Figure 28: The mode indicator icon on the launch page of the SL3 interface

Real-time Layout Controls – The Accordent SL3 interface puts the ability to control layouts in the hands of the viewer. As opposed to the Accordent PM3 interface where the layout is defined at the time of publish, the SL3 interface allows the user to swap both the size and the position of the video and sync regions right within the interface (Figure 29). While two controls are related, they operate independently of each other, giving the user the ability to precisely configure the exact viewing experience they want.



Figure 29: The layout buttons on the Accordent SL3 control bar.

It's important to note how these two controls behave in relationship to each other. The swap button will swap the positions of the media and sync regions but preserve the existing dimensions. Clicking the layout will bring up a layout panel and the viewer can select from four standard layouts:

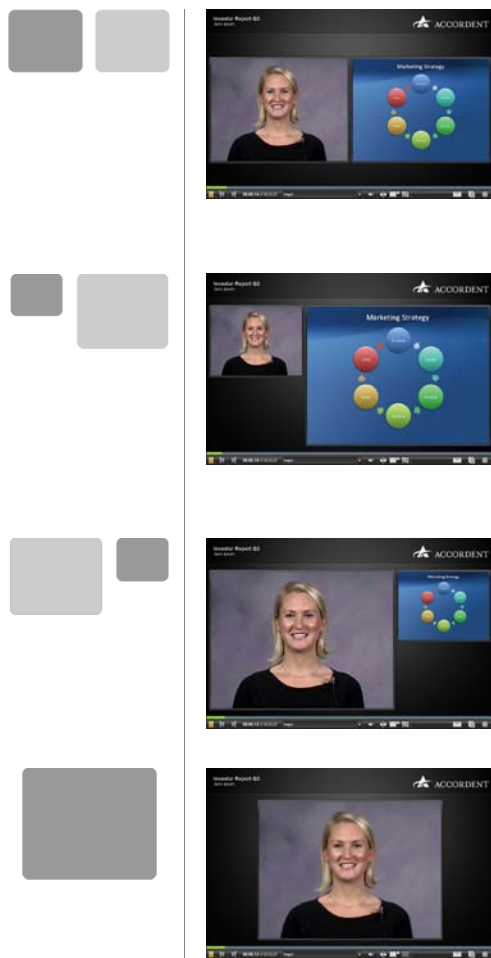


Figure 30: Accordent SL3 layouts

Even

This is the default layout that an SL3 presentation is launched in. By default, the media panel is on the left side and the sync panel is on the right side. It is an ideal layout to use when the media and the sync content requires equal prominence on the presentation window.

Small-Large

This layout uses a small left panel and a large right panel. Those familiar with the PM3 interface will recognize this positioning as the default layout. As with any layout, swapping the panels will cause the positions of the panels to switch.

Large-Small

This is a mirror of the Small-Large layout and simply uses a large left panel and a small right panel. As with any layout, swapping the panels will cause the positions of the panels to switch.

Single

This layout displays only a single panel, which is useful in cases where one panel can be removed entirely in favor of completely highlighting the other. As with any layout, swapping the panels will cause the positions of the panels to switch. It is important to note, however, that the thumbnails button will be disabled when only the media panel is visible.

Multiple Bandwidths – Capture Station™ and PresenterPRO™ are both capable of supporting up to three different bandwidths. Because the Accordent SL3 interface is a video-only solution, and because Capture Station is pre-configured to stream only audio in a low bandwidth stream, you must select a different encoder profile within Capture Station when using this skin. Please refer to your Capture Station manual on how to change profiles.

Windows Media Video-Audio Format – Windows Media Video (.wmv) and Audio (.wma) are proprietary media formats developed by the Microsoft Corporation. Because this format is installed by default with all Windows-based PCs, it is widely recognized. The Accordent SL3 interface takes advantage of the Silverlight framework to display these media formats. The Silverlight plug-in is free to download and install from Microsoft and available for all supported browsers. Silverlight provides an identical feature set and viewing experience to all users.

Pre-publishing – Capture Station™ is capable of “pre-publishing” an interface to a content location before an event starts. This feature allows the presenter to open a stand-by window before the start of a live event by uploading the interface files to a content location before any encoder streams are started. While inside the pre-publish window, users trying to access the event will simply see a generic wait

message on the event launch page (Figure 31). The launch page will refresh every sixty seconds until the event has been started by the presenter, after which event links to launch the interface will appear.



Figure 31: The pre-publish window shows a wait message until the presentation is started

Interface Header Image – You may replace the default image in the interface with a custom branded image of your own, such as one of your organization’s logo. The image you define in this tag will replace the Accordent logo image in the header. The header region in the interface will accommodate an image up to 1012x90 pixels (Figure 32), and has been pre-configured with a right-justification and no tiling. When pairing your own custom header image with a custom background image, use PNG files with a transparent background for best results.

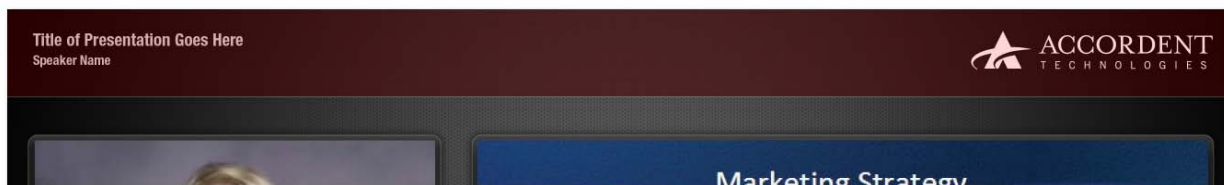


Figure 32: The custom header image can be as large as the area shaded in red

Interface Background Image – You may replace the default background image (Figure 33) with a custom branded image of your own. The image you define in this tag will replace the Accordent background image in the interface. The background image will accommodate an image up to 1012x670 pixels.



Figure 33: The default background image

Launch Page Header Image – You may replace the default header image in the launch page with a custom branded image of your own, such as one of your organization’s logo. The image you define in this tag will replace the Accordent logo image in the launch page. The header region in the launch page will accommodate an image up to 900x90 pixels (Figure 34), and has been pre-configured with a left-justification and no tiling.

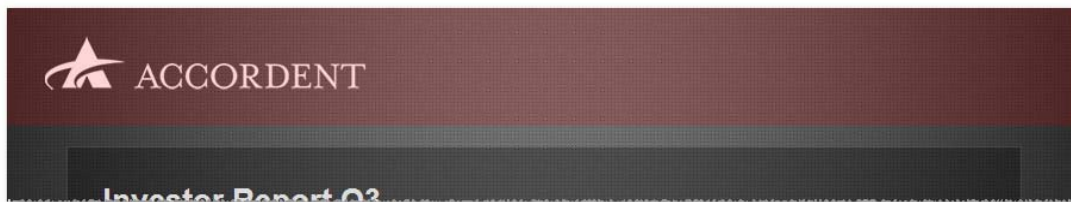


Figure 34: The custom header image in the launch page can be as large as the area shaded in red

Launch Background Image – You may replace the default background image in the launch page (Figure 35) with a custom branded image of your own. This image has been pre-configured to tile, so you may create a pattern swatch and have it repeat along both the X- and Y- axis.



Figure 35: The default launch background image

Event Meta Data – Meta data fields provide descriptive text for a presentation and also serve as keywords for searching when used with the Accordent Media Management System™. These fields are available by default and visible when the Info icon (Figure 36) is clicked:

- Presentation Title
- Presentation Speaker
- Presentation Date/Time
- Presentation Description



Figure 36: The Event Info Icon

Speaker Image – The speaker image allows for a speaker's headshot to be displayed alongside his or her name on both the launch page as well as the Event Info tab in the interface (Figure 37). The speaker image can be up to a 60x80 pixel image. If no image is used, then a silhouette of a person's bust is used by default. This feature is new for the Accordent SL3 interface.



Figure 37: The Event Info tab can display the title, a speaker name, the event date, a description and a speaker image

Email – If an email is provided, the Accordent SL3 interface will enable an “Email” icon (Figure 38). Clicking the email link will launch the default email client on the operating system. This tab will not display if no email is provided.



Figure 38: The Email Icon

Q&A – The Q&A feature can be enabled for live Capture Station™ and PresenterPRO™ presentations and it can be moderated or email driven (PresenterPRO only). If enabled, a “Q&A” icon will be available (Figure 39).



Figure 39: The Q&A icon

Clicking on the icon reveals the Q&A tab, and the viewer can submit their name, email address, and a question. Once a question has been submitted, a success message will be briefly displayed and the viewer can either submit another question or click on the icon again to close the tab. This feature is only available for live presentations, and is automatically disabled when a presentation is archived. Q&A can be configured to display in one of three modes:

- *Default* – this mode requires the user to provide their name and email address along with their question.
- *Anonymous* – this mode enables the name and email fields, but does not require the user to enter this information when submitting a question (available only for moderated versions of Q&A).
- *OnlyQuestion* – this mode disables the name and email fields and only displays the question field to the user. It is commonly used in conjunction with AMMS or a registration enabled event where the name and email can be retrieved from the session.

Moderated Q&A Web Console – This utility can be used in conjunction with the moderated Q&A feature in an interface and provides a moderator the functions necessary to manage questions received during a live event. A password protected web console can be found by viewing the “moderator.asp” page from a browser using the content location URL base. This password can be changed from a custom tag within Capture Station™ or in the Q&A section of the Interface Options of the PresenterPRO™ application)..

Resources – The “Resources” icon reveals a tab that houses extra files or links that provide supplemental information beyond the content of a presentation. While creating the presentation, you can add up to three files or define up to three links. Capture Station™ and PresenterPLUS™ allow you to locate these files on your computer and will upload the files to the content server along with the rest of the interface files. PresenterPRO™ requires you to provide absolute paths to files that can be accessed via the web. Resource links will open in a new browser window. The “Resource” icon will not display if no resources are provided (Figure 40).



Figure 40: The Resources Icon

Topics (Chapters) – The topics panel (Figure 41) is only enabled for archived or on-demand presentations and provides a few new features for navigating and searching a presentation. Clicking on the yellow arrow in the current topic title display enables this panel. Topic markers are either automatically or manually created from an Accordent content creation tool. The SL3 interface displays these topics in a chronological list by default. Using the sort icons in the chapter panel, however, a viewer can toggle between a chronological list or an alphabetical list. The SL3 chapter panel also features a search tool, which allows the viewer to search topic titles. The search is performed in real-time, so viewers will see returned results as they type.

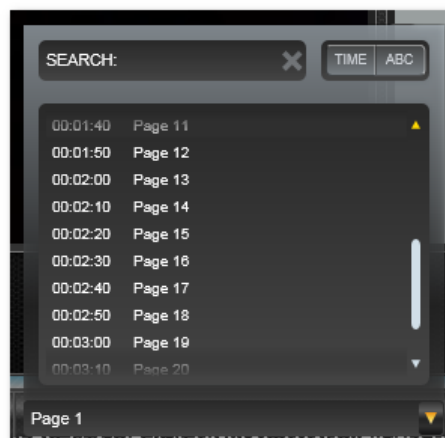


Figure 41: The Topics panel includes new functionality like search and sorting

Thumbnails – The thumbnails panel (Figure 42) of the SL3 interface has been newly redesigned, but shares many similarities with the Accordent PM3 feature. Most notably, the SL3 thumbnail panel is integrated with the sync region, so a separate pop-up window is not necessary. Like the PM3 interface, an ordered list of thumbnails is displayed in a scrollable list. With the SL3 interface, the preview of the current slide is always displayed, so the viewer never loses track of the presentation content.

The thumbnail panel can only be displayed when the sync panel is in its large size, so clicking on the thumbnail icon will automatically update the layout to accommodate this feature. Clicking on it again will restore the previous layout.



Figure 42: The SL3 thumbnails panel is integrated with the sync panel

Customization

The Accordent SL3 interface offers flexibility right out of the box by allowing you to change background and logo elements. For more advanced users who are familiar with XAML, more in-depth customization can be achieved by editing the defaultResources.xaml file. In the case of any code changes, it's always a good idea to make a backup copy of the interface being modified.

Custom Tags (Advanced Tags)

The Custom Tags (Advanced Tags) screen of each application allows a presenter to easily change the interface background image or logo image used in the header of both the launch and interface pages. In all applications, leaving these tags empty will make the interface default to the included Accordent images.

Capture Station™

1. Select the Accordent SL3 interface from the "Default" group in the "Interface Style" drop-down menu.
2. In the "Presentation Details" list, scroll down to the three tags that define the images used for the interface background, interface header, launch background, and launch header images (Figure 43). Click on the "Browse" button to use a local image file. This file will be uploaded along with the rest of the interface files to the content directory. Image size information will be given in the description text of each tag.

Custom Tag	Value	
Video Aspect	4:3	
Topics Tab	yes	
Speaker Image		Browse
Template Background Im...		Browse
Template Logo Image		Browse
Launch Background Image		Browse
Launch Logo Image		Browse
Copyright		
Closed Captioning	no	
Thumbnails	yes	
Moderated Q&A Tab		

Figure 43: These images can be customized from the "Presentation Details" list in Capture Station™...

PresenterPLUS™

1. Select the Accordent SL3 interface from the "Choose Skin" tab.
2. Click the "Customize Skin" tab.
3. Scroll down to the three tags that define the images used for the interface background, interface header, launch background, and launch header images (Figure 44). Click on the "Browse" button to use a local image file. This file will be uploaded along with the rest of the interface files to the content directory. Image size information will be given in the description text of each tag.

Custom Tag	Value	
Speaker Image		Browse
Template Background Im...		Browse
Template Logo Image		Browse
Launch Background Image		Browse
Launch Logo Image		Browse
Copyright	.	

Figure 44: ...in the "Customize Skin" tab in PresenterPLUS™...

PresenterPRO™

1. Select the Accordent SL3 interface from the "Interface Options" panel of the Presentation Wizard.
2. Click the "Advanced" button.
3. Scroll down to the three tags that define the images used for the interface background, interface header, launch background, and launch header images (Figure 45). In PresenterPRO™, enter the URL where this image can be referenced from within the published interface in the "Edit Options" section. This URL should be an absolute path, and should not have any permission or security settings that might prevent a presentation from referencing it. Image size information will be given in the description text of each tag.

Name	Value	Description
Description	Accordent PresenterPRO F	Enter a description for this presentation.
Topics Tab	yes	Enter 'yes' to show the Topics tab for on-demand presentation
Video Aspect	standard	Enter the video aspect ratio: '4:3' is standard typical. '16:9' is v
Speaker Image		Select an image (JPG or PNG only) for the speaker of the pres
Template Background Image		Enter a path to a background image to use in the template. Im
Template Logo Image		Enter a path to a logo image to use in the template. Image size
Launch Background Image		Select a background image to use in the launch page. Image
Launch Logo Image		Enter a path to an image to use for the launch page header. Ir
Copyright	Copyright 2010 Accordent	Enter your copyright message. (ie: Copyright Your Company 20
Closed Captioning	no	Enter 'yes' to enable closed captioning.
Thumbnails	yes	Enter 'yes' to enable thumbnails.
Moderated Q&A Tab	yes	Enter 'yes' to enable moderated Q&A during live presentation

Figure 45: ...and finally in the “Advanced” options in PresenterPRO™

XAML

Colors and styles in the Accordent SL3 are powered by XAML. Most of these settings are exposed in a document named defaultResources.xaml. However, it is highly recommended that you are familiar with XAML before attempting to make any modifications to this file.

It is possible to make very granular adjustments with this file, such as controlling the gradient colors on the video progress bar or the thickness of the border on the play icon. As such, due to the breadth and length of this document, only a few common modifications will be provided as examples. Like CSS modifications, any changes applied to this document will reflect immediately in the interface when the window is reloaded.

Change Color of Presentation Title – When you select a custom background image, you may also need to change the color of the presentation title text in the header for better contrast. The Accordent SL3 interface uses a semi-transparent black layer to distinguish the header from the background, so white is the default color. Follow these steps to change it to another color of your choice.

1. Open defaultResources.xaml.
2. Look for the “TitleTextBlockStyle” styles between lines 4334-4339.
3. Change the “Foreground” property to a color of your choice. Take care to note that XAML uses an 8-digit hexadecimal scheme to define color, unlike CSS which only uses 6 digits. The first pair in a XAML color definition defines the alpha channel, or opacity level, of the object. To make your text completely opaque, use FF to precede your 6 digit hex color.

```

4334 <Style x:Key="TitleTextBlockStyle" TargetType="TextBlock">
4335     <Setter Property="Foreground" Value="#CCFFFFFF"/>
4336     <Setter Property="FontFamily" Value="Arial"/>
4337     <Setter Property="FontSize" Value="16"/>
4338     <Setter Property="FontWeight" Value="Bold"/>
4339 </Style>

```

Change Color of the Scrub Bar – To better complement your organization’s branding and color schemes, you may also want to modify the color of the player scrub bar.

1. Open defaultResources.xaml.

2. Look for the “Controller” styles between lines 48-55.
3. There are two color properties here that can be adjusted. These two color values represent the gradient color stops on the scrub bar. Change the last 6 digits to the hex color value of your choice.

```
48     <LinearGradientBrush x:Key="Controller"  
49         StartPoint="0,0"  
50         EndPoint="0,1">  
51         <GradientStop Color="#E5C9FF30"  
52             Offset="0" />  
53         <GradientStop Color="#E57BE31D"  
54             Offset="1" />  
55     </LinearGradientBrush>  
56
```

Index

A

advanced tags · *See* custom tags
archive mode · *See* on-demand mode, *See* on-demand mode, *See* on-demand mode
audio-only · 12, 17, 18
auxiliary mode · 6, 20

C

chapters · *See* topics
closed captions · 6, 7, 18
copyright · 6, 20
CSS · 4, 11, 22, 24, 25, 26
custom background image · 7, 16, 17, 22, 23, 34, 35, 39, 40
custom header image · 16, 22, 23, 34, 39, 40
custom launch header image · 16, 22, 23, 35, 39, 40
custom tags · 22, 39
customization
 hover color of buttons · 26
 hover color of links · 26
 images · 29
 padding between modules · 26
 removing the matte · 25
 stylized scrollbars · 24
 swapped regions by default · 30
customization · 13, 17, 22
customization
 enabling registration · 30
customization · 39

E

email · 6, 19, 26, 37

F

fullscreen mode · 6, 18

I

interactivity · 6, 21
 clear · 22
 fact · 21
 photo · 21

question & answer · 21
survey · 21
trivia · 21

interfaces · 7, 8

 Accordent Professional · 7, 8, 9, 11, 22
 Accordent Professional (Audio Podcast) · 9
 Accordent Professional (Silverlight) · 7, 8, 31, 32, 33, 39, 40
iTunes · 18

J

javascript · 4, 11, 13, 22

L

last slide sync · 20
layout modes · 7, 8, 12, 13, 32
 default · 8, 9, 13
 fullscreenvideo · 8
 noslide · 8, 9, 13, 20
 onlyvideo · 8, 9, 14, 20
 swapped · 8, 9, 33
 videoright · 8, 9, 13
live mode · 4, 12, 20, 21, 32
local playback · 12

M

media formats · 14
 Flash · 6
 MP3 · 6, 18, 24
 RealMedia · 6, 14, 18
 Silverlight · 6, 14, 31, 33
 Windows Media · 6, 14, 18, 33
metadata · 6, 19, 36
 presentation date · 19, 36
 presentation description · 7, 19, 36
 presentation speaker · 19, 36
 presentation title · 6, 7, 19, 36
moderated Q&A · 6, 7, 12, 19, 21, 32, 37
moderated Q&A web console · 19
multiple bandwidths · 14, 17, 33
multiple layouts · *See* layout modes

O

on-demand mode · 4, 6, 12, 18, 19, 20, 32, 38
opaque matte · 25

P

pre-publishing · 15, 33
presentation mode · *See* fullscreen mode

R

registration · 6, 17, 22, 30
requirements and compatibility · 9
resources · 6, 7, 19, 21, 26, 37

S

swap · 6, 12
syncs · 20

- interactive · 20, 21
- slide · 20
- SWF · 6
- URL · 6, 19, 20

T

thumbnails · 6, 12, 20, 24, 26, 32, 38
topics · 7, 19, 20, 26, 38

U

user interface regions · 6

- footer region · 6, 20
- header region · 6
- launch page · 6
- media region · 6
- presentation window · 6
- sync region · 6, 20
- tabbed region · 6

X

XAML · 41
XHTML · 4, 11

Z

zoom slide · 6, 20, 26
zoom video · 20, 26

Table of Figures

Figure 1: Files that make up an interface are found in the Skins folder of each application.....	4
Figure 2: UI Regions	6
Figure 3: Layouts offered by each interface	8
Figure 4: Dimensions (in pixels) of the presentation window, media and sync regions in the PM3 interface	9
Figure 5: Dimensions (in pixels) of the presentation window, media and sync regions in the SL3 interface.....	9
Figure 6: The Accordent PM3 interface.....	11
Figure 7: Clockwise from upper left: Windows Media, Real Media, Flash, Silverlight.....	12
Figure 8: Accordent PM3 layouts	14
Figure 9: Standard versus Widescreen aspect ratio.....	14
Figure 10: The pre-publish window shows a wait message until the presentation is started.....	15
Figure 11: The custom header image in the interface can be as large as the area shaded in red	16
Figure 12: The default background image.....	16
Figure 13: The custom header image in the launch page can be as large as the area shaded in red	16
Figure 14: The default launch background image	17
Figure 15: When enabled, viewers must first complete a registration form before the interface can be viewed	17
Figure 16: The Windows Media Player in Audio Only mode	18
Figure 17: The Accordent PM3 MP3 interface	18
Figure 18: Thumbnails pop up in a new window over the interface when launched	20
Figure 19: PresenterPRO interactive features	22
Figure 20: These images can be customized from the "Presentation Details" list in Capture Station™.....	23
Figure 21: ...in the "Customize Skin" tab in PresenterPLUS™.....	23

Figure 22: ...and finally in the "Advanced" options in PresenterPRO™	24
Figure 23: A standard, unstylized scrollbar (left) vs. one that has been styled through CSS (right)	25
Figure 24: A presentation with the black matte removed	25
Figure 25: The interface after padding (highlighted in red) has been applied	27
Figure 26: Images that make up the rest of the interface	30
Figure 27: The Accordent SL3 interface.....	31
Figure 28: The mode indicator icon on the launch page of the SL3 interface	32
Figure 29: The layout buttons on the Accordent SL3 control bar.	32
Figure 30: Accordent SL3 layouts	33
Figure 31: The pre-publish window shows a wait message until the presentation is started.....	34
Figure 32: The custom header image can be as large as the area shaded in red	34
Figure 33: The default background image.....	35
Figure 34: The custom header image in the launch page can be as large as the area shaded in red	35
Figure 35: The default launch background image	36
Figure 36: The Event Info Icon.....	36
Figure 37: The Event Info tab can display the title, a speaker name, the event date, a description and a speaker image.....	36
Figure 38: The Email Icon	37
Figure 39: The Q&A icon.....	37
Figure 40: The Resources Icon.....	38
Figure 41: The Topics panel includes new functionality like search and sorting	38
Figure 42: The SL3 thumbnails panel is integrated with the sync panel.....	39

Figure 43: These images can be customized from the "Presentation Details" list in Capture Station™.....40

Figure 45: ...and finally in the "Advanced" options in PresenterPRO™41

Figure 44: ...in the "Customize Skin" tab in PresenterPLUS™40

Resources

Accordent FAQ & UI Compatibility Chart on Parature
<http://support.accordent.com>

HTML Entities
http://www.w3schools.com/tags/ref_entities.asp

HTML Character conversion page (for *Accordent PM3* UI):
[http://modules1.accordent.com/ Downloads/dgasperi/accordent/convertChars.htm](http://modules1.accordent.com/Downloads/dgasperi/accordent/convertChars.htm)